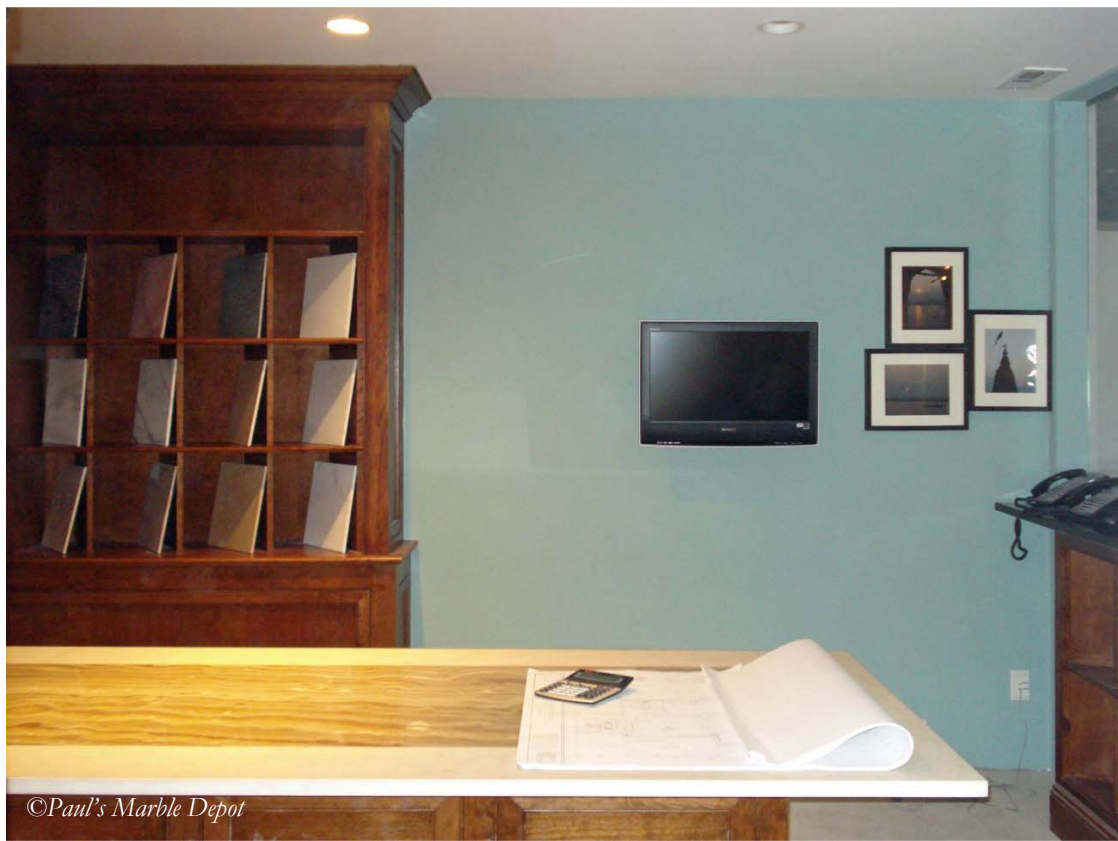


*Kitchens and Bathrooms, Tiles and Mosaics
Floors and Fireplace surrounds too*

Paul's
**MARBLE
DEPOT**



©Paul's Marble Depot

Tastefully decorated, refined showroom...

Size of the showroom allows for unburied, smooth selection. The extensive range of stones on display speaks of its quality, style and scope of an unmatched design.

*A fully equipped conference room, **left**, is provided for the client and the design team .*



©Paul's Marble Depot



©Paul's Marble Depot



Kitchens pgs 5-22



Bathrooms pgs 23-38



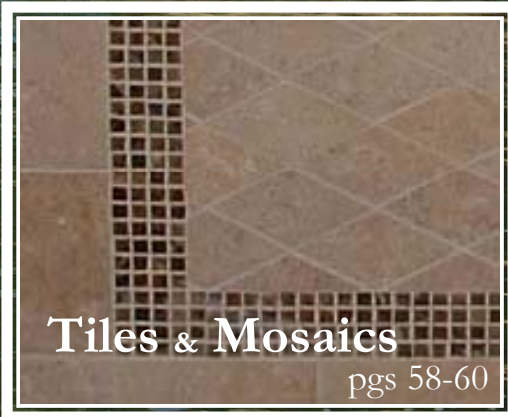
Projects pgs 39-48



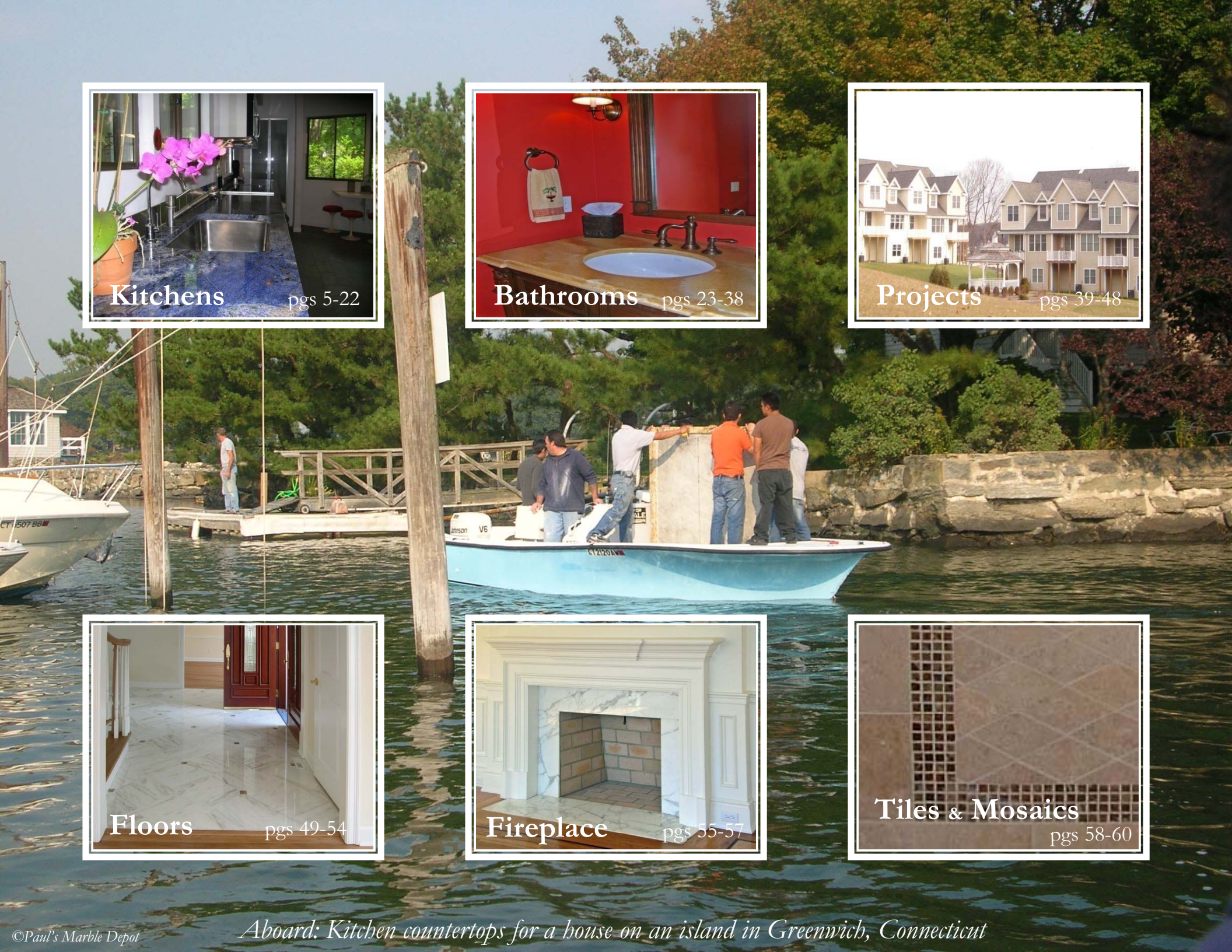
Floors pgs 49-54



Fireplace pgs 55-57



Tiles & Mosaics pgs 58-60



Aboard: Kitchen countertops for a house on an island in Greenwich, Connecticut

You may notice, we have chosen for this brochure, GARAMOND fonts - Classic, Timeless, and above all, projecting elegant simplicity. We believe that these fonts truly represent our concepts, ideas and designs.

Location:

***Paul's Marble Depot, LLC
40 Warshaw Place,
Stamford, CT 06902***

www.marble-depot.com

Business Hours:

OPEN 7 Days

Monday- Friday: 7:30 A.M. to 5:30 P.M.

Saturday: 8:00 A.M. to 4:00 P.M.

Sunday: 9:00 A.M. to 4:00 P.M.

Contact information :

tel. : 203 978 0669, 914 422 8181

fax : 203 978 0679, 914 422 8182

email: info@marble-depot.com

*Directions (coming from North): I-95 South bound, exit 6 (West Ave),
Left on West Ave under the highway, second right on Warshaw Place, #40*

*Directions (coming from South): I-95 North bound, exit 6 (Harvard Ave),
Right on Harvard Ave, first left on Warshaw Place, #40*



©Paul's Marble Depot

Christopher Peacock kitchen cabinets with Gioia Carrara (satin finished) countertop and island in a designer home on Old Greenwich waterfront. © Paul's



©Paul's Marble Depot

A Van Hoesen project off of Stanwich in Greenwich

The Island shelf, 132 inches long and 56 inches wide, was fabricated and installed in one piece.

The granite sink was fabricated and assembled in-house.

The decorative edge finish is achieved by laminating, giving an overall appearance of 60 mm thickness.

© Paul's





©Paul's Marble Depot

Left and below Right: For this kitchen with two tone cabinetry, Delirium extra granite was used on the island.

Below left: Costa Smeralda Originale was used on the perimeter.

Backsplash designed and fabricated in-house.

Cabinets by Form Limited of Greenwich, CT.



©Paul's Marble Depot



©Paul's Marble Depot

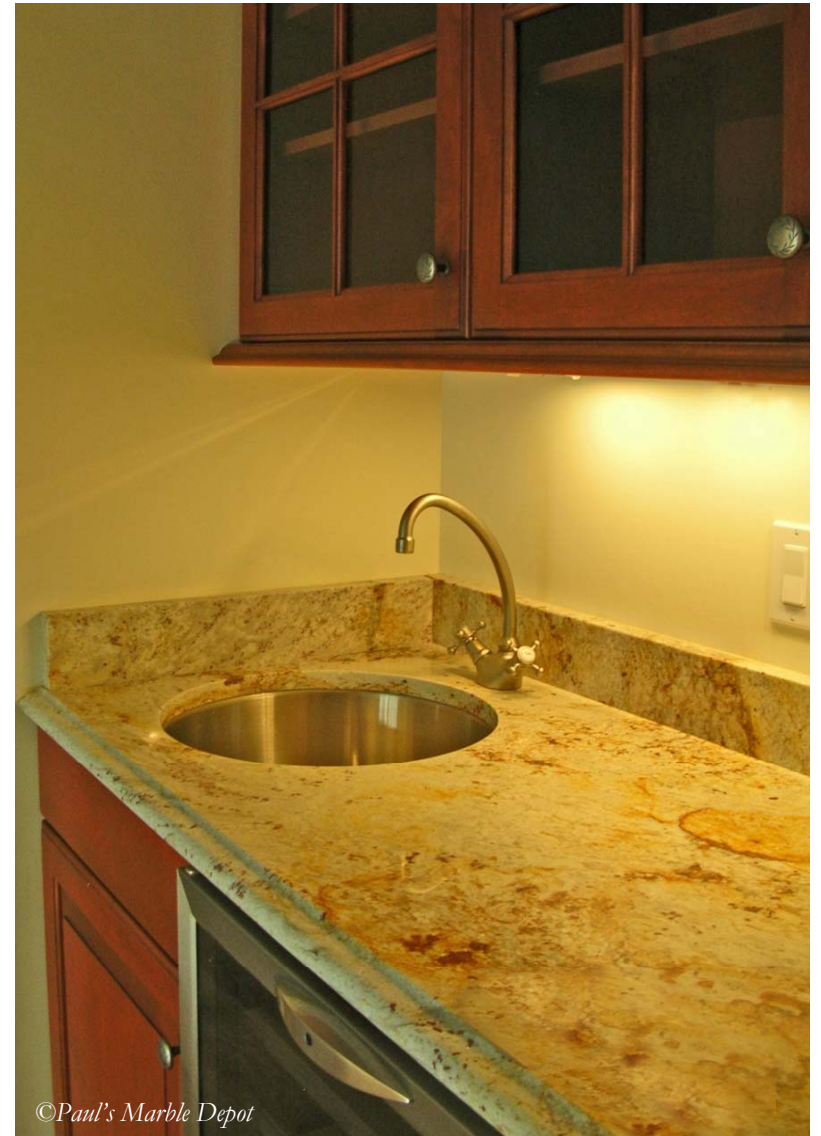


©Paul's Marble Depot

Typoon Gold granite, neutral in color was used in the kitchen with dual color cabinetry for a house in Stamford. Ogee edge throughout, the tiles in the backsplash were designed and fabricated in-house.



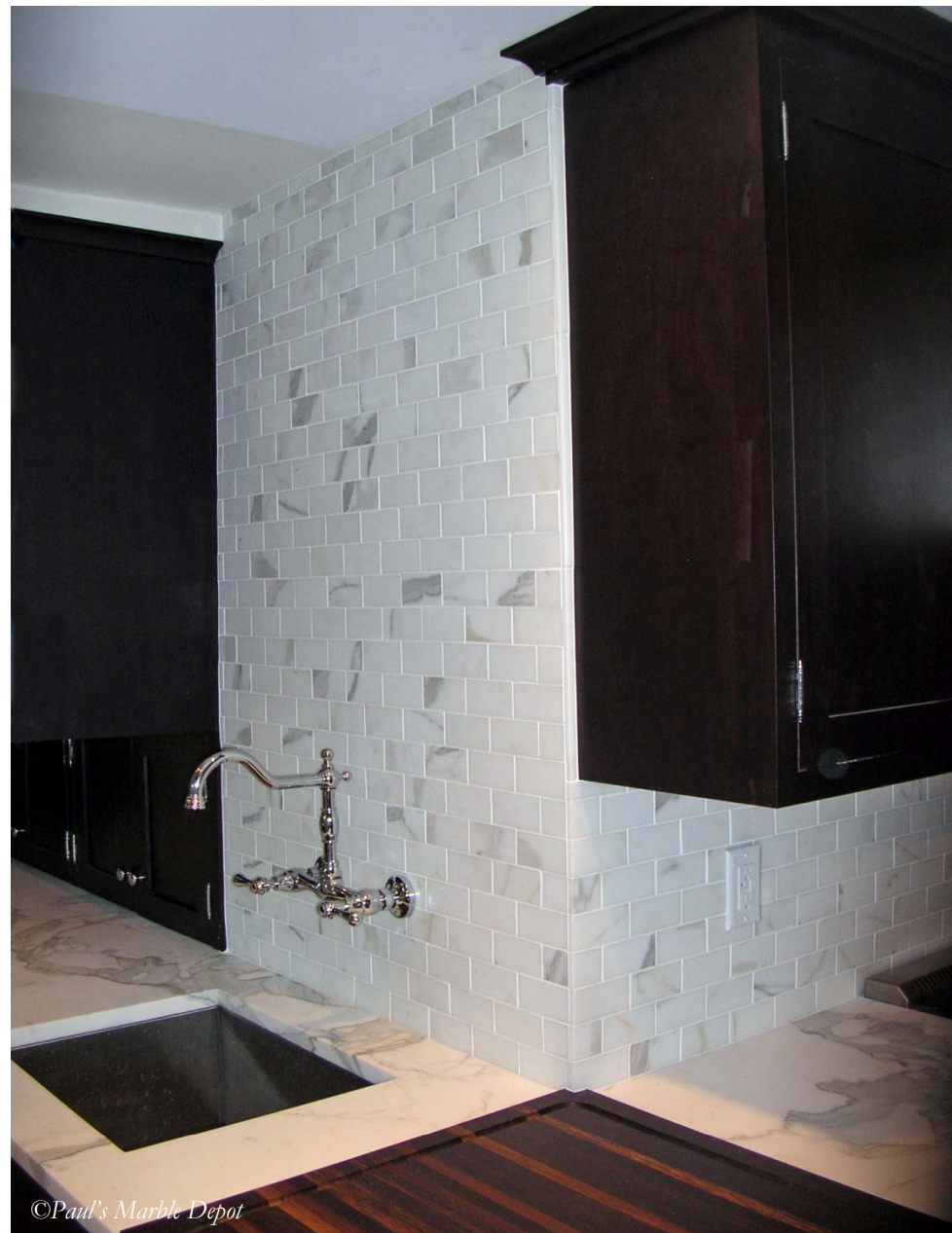
©Paul's Marble Depot



©Paul's Marble Depot



©Paul's Marble Depot



This page and Opposite: A modern kitchen in Old Greenwich was topped with classic Italian Calacatta Gold marble.

Top Left: The block, from which the slabs were cut, was selected by us in Italy.

Above: Backsplash tiles fabricated in-house.



©Paul's Marble Depot

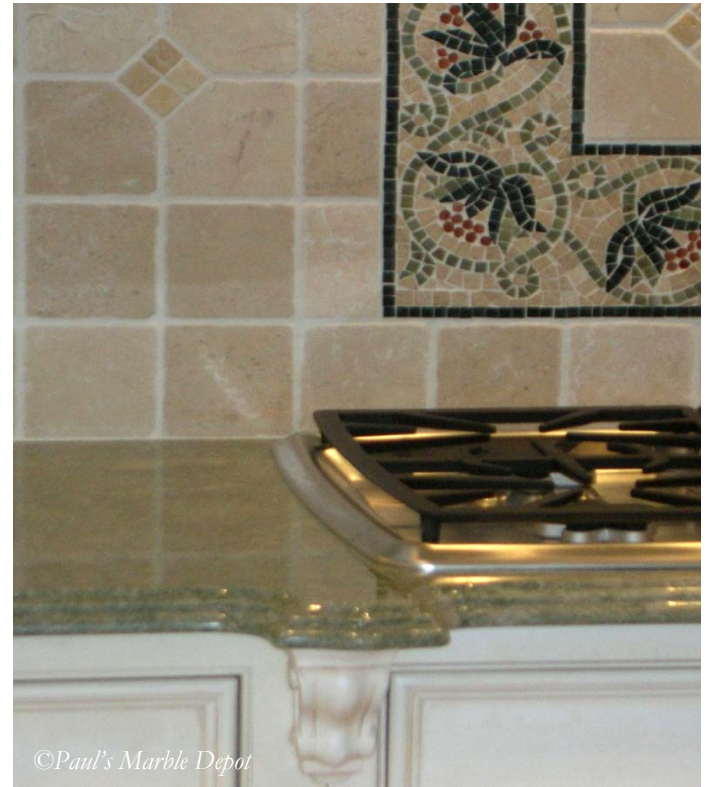


©Paul's Marble Depot



©Paul's Marble Depot

This page: A house on North Street, Greenwich, exquisite Costa Smeralda was used for the perimeter counters. Neutral Crema Marfil was used for the island countertop.



©Paul's Marble Depot



©Paul's Marble Depot





©Paul's Marble Depot

This page and Opposite: A kitchen, with two tone cabinetry and two islands, was topped with 250sqft of stone countertops. Center island is Brown Antique granite, 126 inches long in one piece.

Opposite page: Multi Red Onyx on the desk (bottom right). D'Arcy Gold on the perimeter counters, second island and bar shelf.





©Paul's Marble Depot





©Paul's Marble Depot

Above: Michel Angelo Calacatta honed marble used for the kitchen island with dual tone cabinetry.



©Paul's Marble Depot

Left: Serrated draining board is carved on the center island for the sink.

Below: Custom designed and manufactured Carrara backsplash to compliment the gray in Pietra Cardosa.



©Paul's Marble Depot

Below & below Right: Pietra Cardosa for the white perimeter cabinets.



©Paul's Marble Depot



©Paul's Marble Depot



©Paul's Marble Depot

Below: A thoroughly modern kitchen with Black Granite island and countertop, in Old Greenwich.



Above: A timeless, classic Calacatta Gold kitchen in New Canaan.

Above Right: Backsplash in 3"x6" white ceramic tiles cleverly designed in Herringbone pattern tucked in Calacatta gold border.





©Paul's Marble Depot



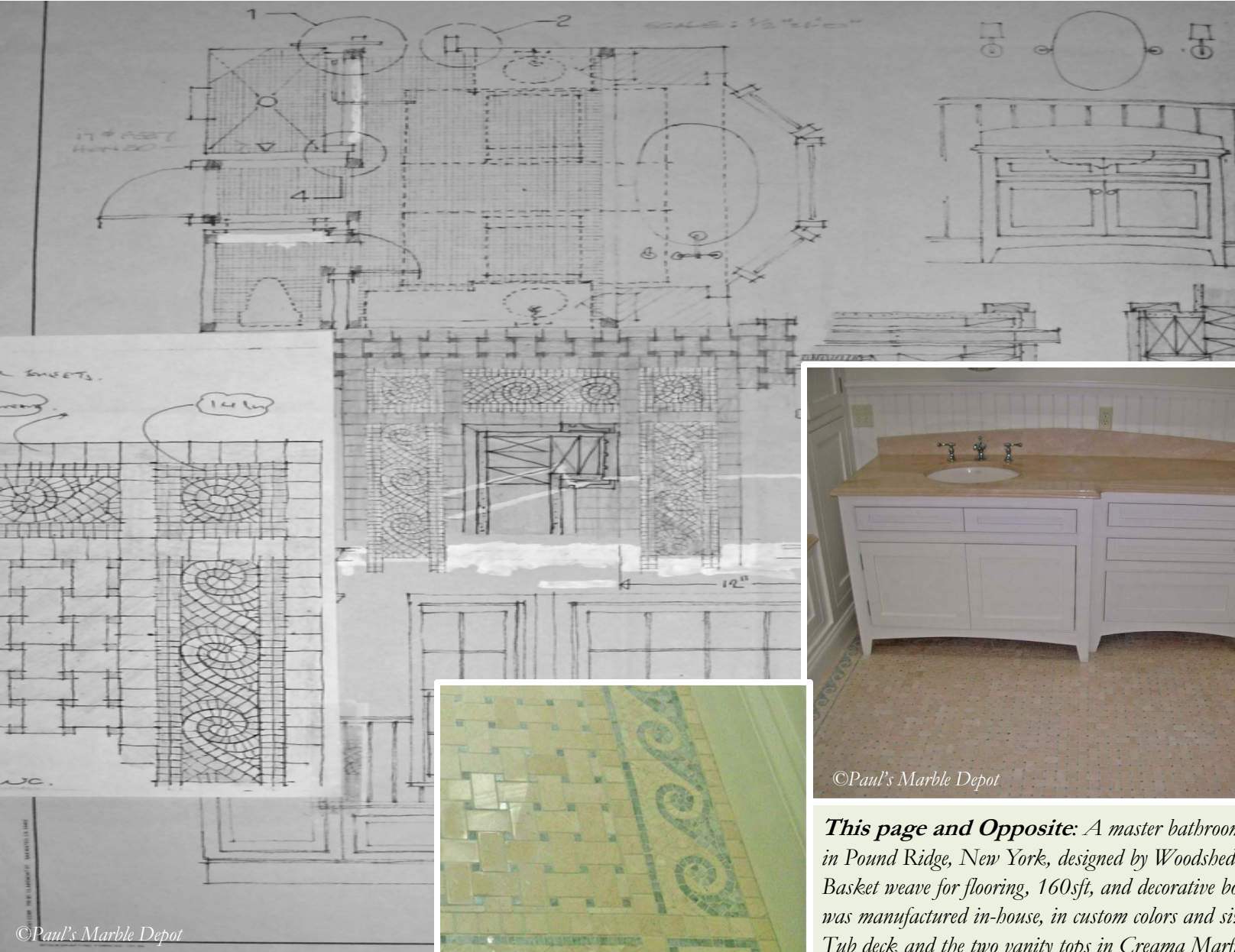
©Paul's Marble Depot



©Paul's Marble Depot



You Design, We Create



©Paul's Marble Depot

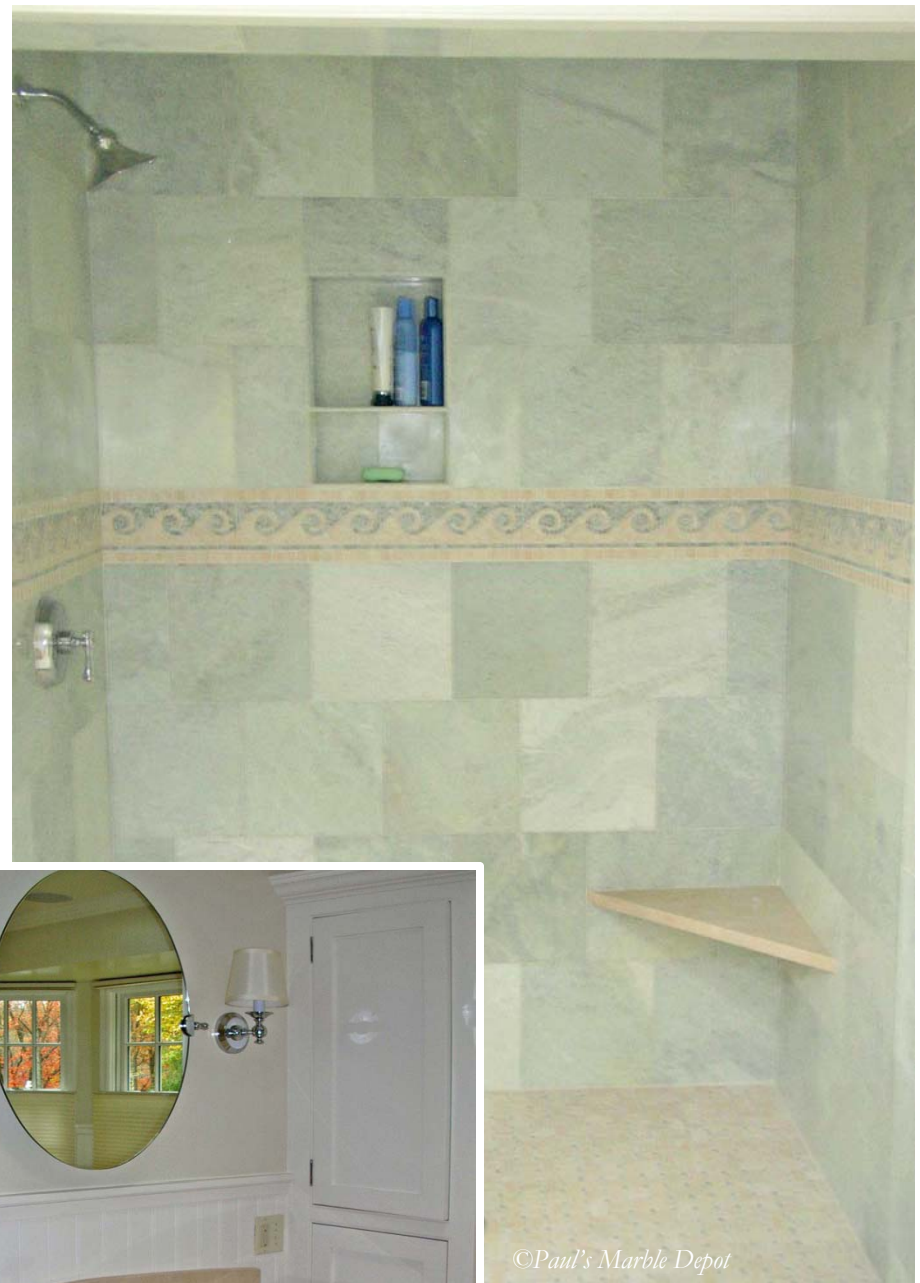
©Paul's Marble Depot

This page and Opposite: A master bathroom for a house in Pound Ridge, New York, designed by Woodsbed Design. Basket weave for flooring, 160sft, and decorative border, 80lft, was manufactured in-house, in custom colors and size. Tub deck and the two vanity tops in Crema Marfil, an inch and a quarter thick.

©Paul's Marble Depot



©Paul's Marble Depot



©Paul's Marble Depot



©Paul's Marble Depot



©Paul's Marble Depot



©Paul's Marble Depot

This page: Statuary white marble is used in the shower, vanity, floor and the tub deck of this master bathroom.



©Paul's Marble Depot



©Paul's Marble Depot



©Paul's Marble Depot



©Paul's Marble Depot

An exquisitely designed Master bathroom in Carrara marble.

The shower walls are 2"x 4" Carrara fabricated in-house installed butt joint. The Greek Key border, a combination of Carrara with Opal Gray marble, manufactured in-house is used on floor, walls and the backsplash on tub deck.

Matching super select Canal Grande variety Gioia White in an inch and a quarter thickness for tub deck and vanity top.



©Paul's Marble Depot



©Paul's Marble Depot



***An Onyx Bathroom** - Honey onyx tiles and chair rail. Vanilla onyx tub deck, vanity top and accent mosaic on walls.*



©Paul's Marble Depot



©Paul's Marble Depot

This page: First quality super select Calacatta Gold, from Italy was used for this custom designed bathroom. The floor tiles in 18" x 18" and the wainscot and shower walls in 12" x 12" tiles were book matched.

Deco border- fleur de lis design- in Calacatta and Dark Emperador was manufactured in-house.

Vanity top and tub deck is Calacatta Gold, 122" long in one piece with refined ogee edge.



©Paul's Marble Depot



©Paul's Marble Depot



©Paul's Marble Depot



©Paul's Marble Depot

Above: A Calacatta Gold tub deck in one piece measuring 118" long and 60" wide.
 Backsplash in book matched Calacatta Gold tiles, 16" x 16".
 In-house custom manufactured Deco Border- fleur de lis- in Calacatta and Dark Emperador.

Left: Creama Marfil an inch and a quarter thick, super select tub deck with Creama Marfil custom brick pattern mosaic and chair rail.

Above Left: Verde Agave vanity top.



©Paul's Marble Depot

Above: Calacatta Gold marble 18"×18" beautifully laid out on the floor of this contemporary bathroom with free standing bath tub and vanity.

Above right: An open shower, 3 full walls and floor, of custom in-house manufactured, 5/8" × 5/8" Calacatta Gold tumbled mosaic to match Calacatta Gold 18" × 18" tile in the bathroom.



©Paul's Marble Depot





Above Left: Azul Bahia granite vanity top in 1-1/4" thickness with Ogee edge.

Above Right: Jerusalem Gold honed 1-1/4" thick vanity top with a full height backsplash.
The floor in Jerusalem Gold with Jerusalem Pearl inserts.

Left: A contemporary free standing vanity in Sunny Light limestone, 1-1/4" thickness with recessed edge.

Right: Yellow moon granite vanity top 1-1/4" thick, pencil edge with limestone vessel sink.



©Paul's Marble Depot

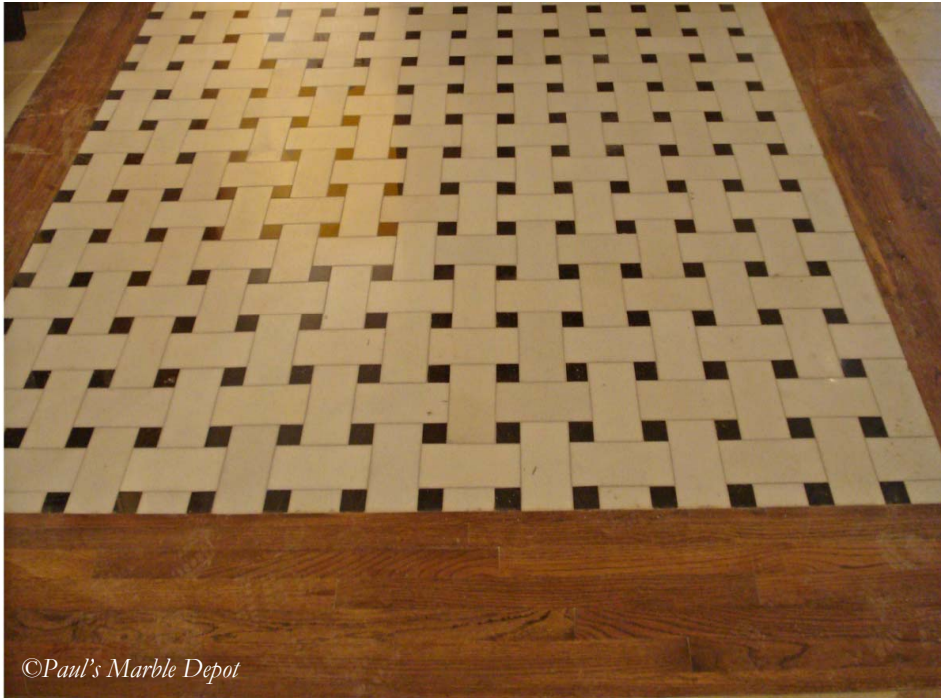
***This page:** A contemporary powder room, vanity top in Black Absolute polished 1-1/4" thick with glass vessel sink.*

The back splash, side splash and the half wall is in slabs of Gris De Siena 3/4" honed limestone.

The floor is laid in limestone –Gris De Siena 3/4" slab with an inset of Black Absolute polished 3/4" slab.



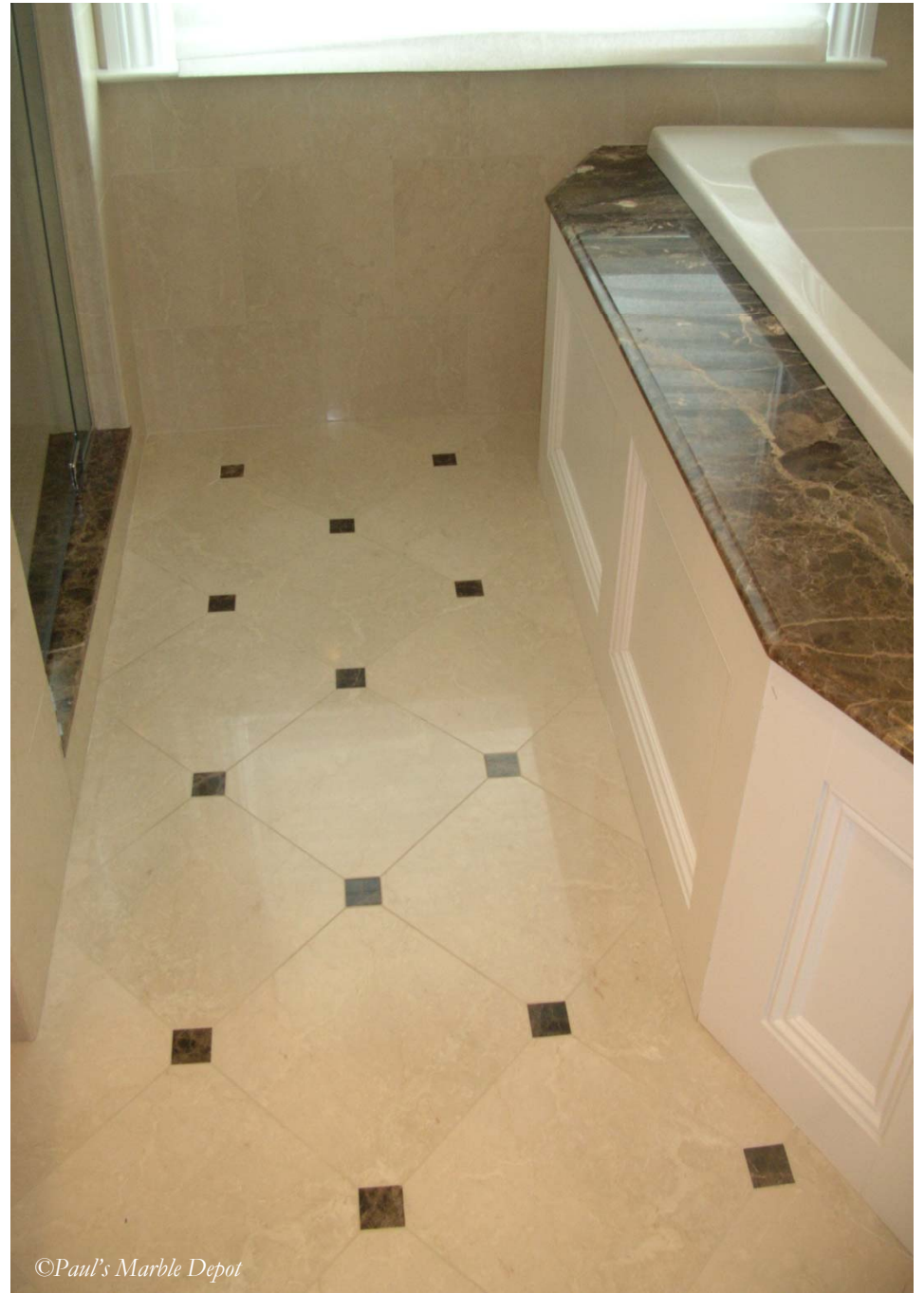
©Paul's Marble Depot



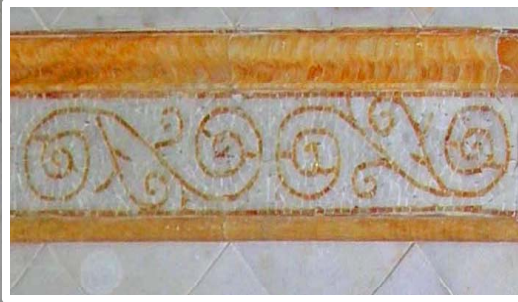
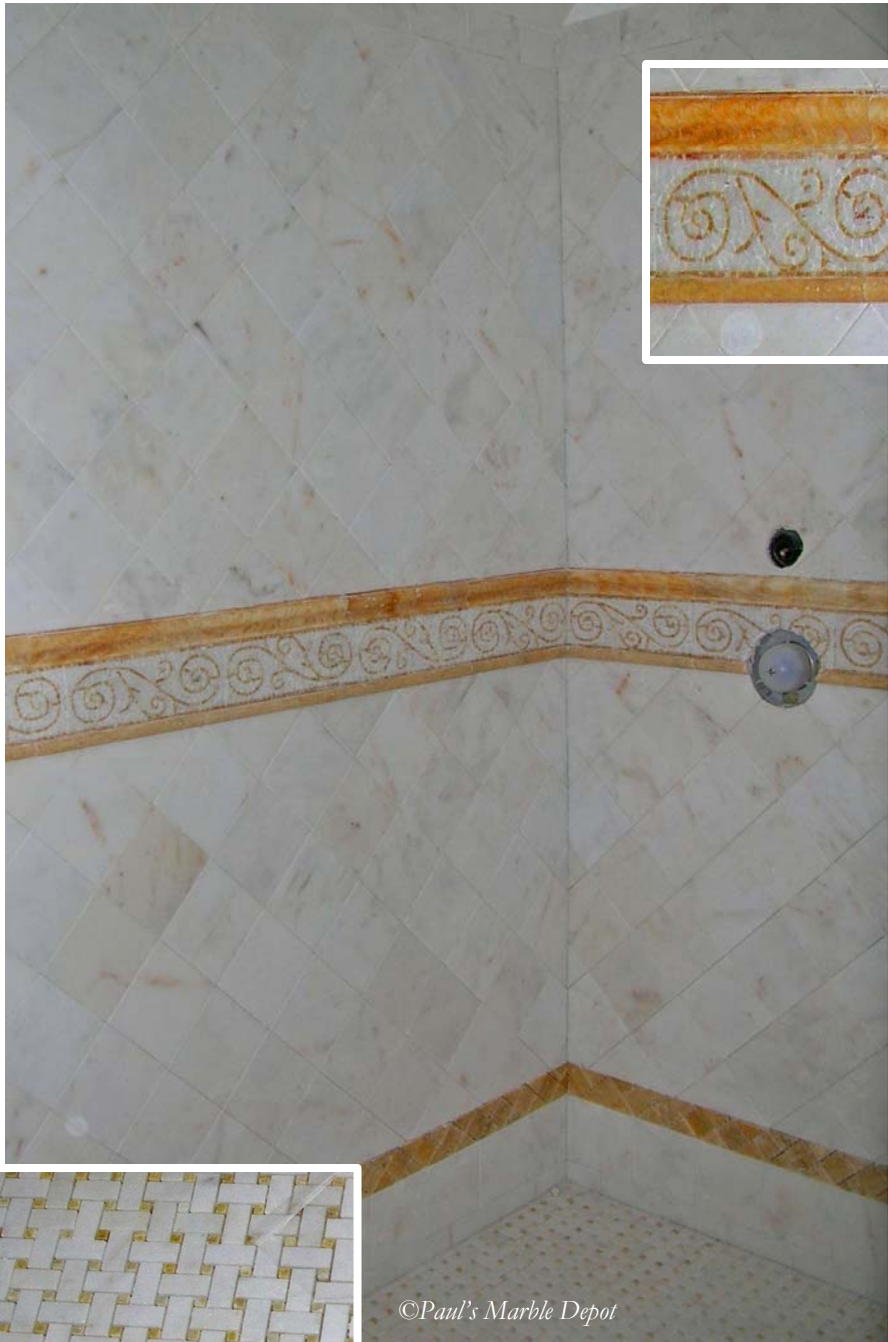
©Paul's Marble Depot



©Paul's Marble Depot



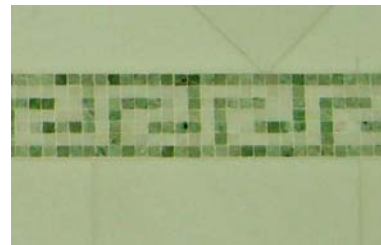
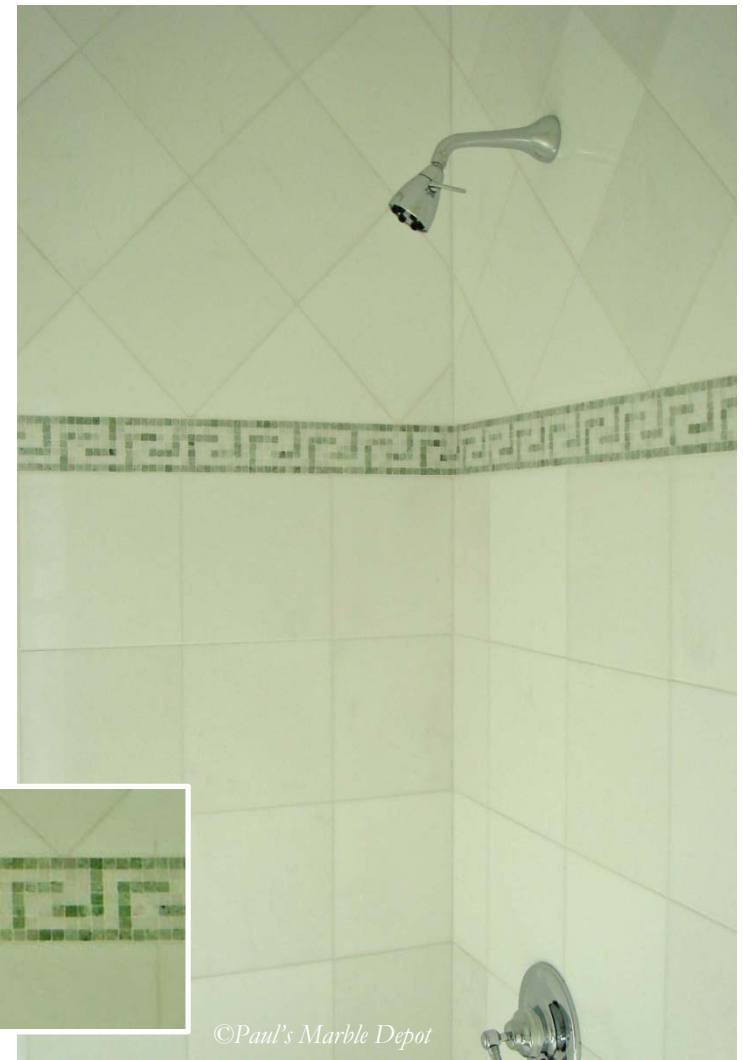
©Paul's Marble Depot



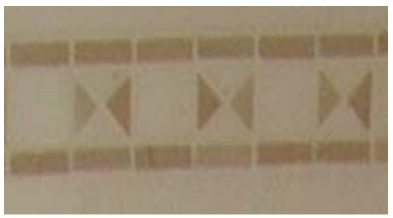
©Paul's Marble Depot



©Paul's Marble Depot



©Paul's Marble Depot



©Paul's Marble Depot

Left: Crema Marfil paired with White Thassos checkerboard flooring. White Thassos walls and custom border (inset).

Below left: Crema Marfil floor with aqua glass mosaic for a house in Westerly, Rhode Island.

Below: Crema Marfil in combination with aqua glass mosaic used in the shower.



©Paul's Marble Depot



©Paul's Marble Depot



©Paul's Marble Depot



©Paul's Marble Depot



Far Left: A vanity in Lagos Azul limestone.



©Paul's Marble Depot



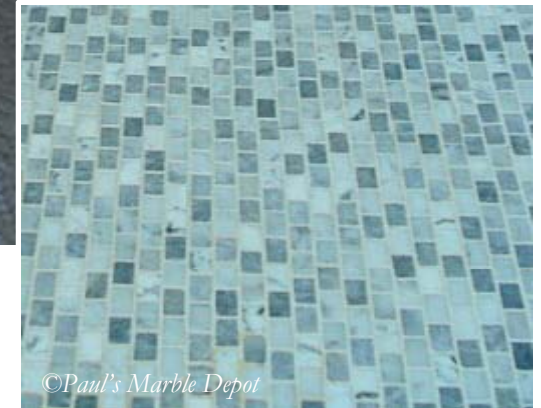


©Paul's Marble Depot

Above: A contemporary design bathroom with two separate vanities in Carrara marble, a free standing tub and mosaic floor.



©Paul's Marble Depot



©Paul's Marble Depot



©Paul's Marble Depot

A house in Westerly, Rhode Island.

Below: Kitchen in Costa Smeralda granite.

Cabinets by Form Limited of Greenwich, CT.

Opposite page: Bathroom tops, tub deck and limestone flooring.



©Paul's Marble Depot



©Paul's Marble Depot



©Paul's Marble Depot



©Paul's Marble Depot



©Paul's Marble Depot



©Paul's Marble Depot

This page and opposite:
A Greenwich Waterfront Mansion

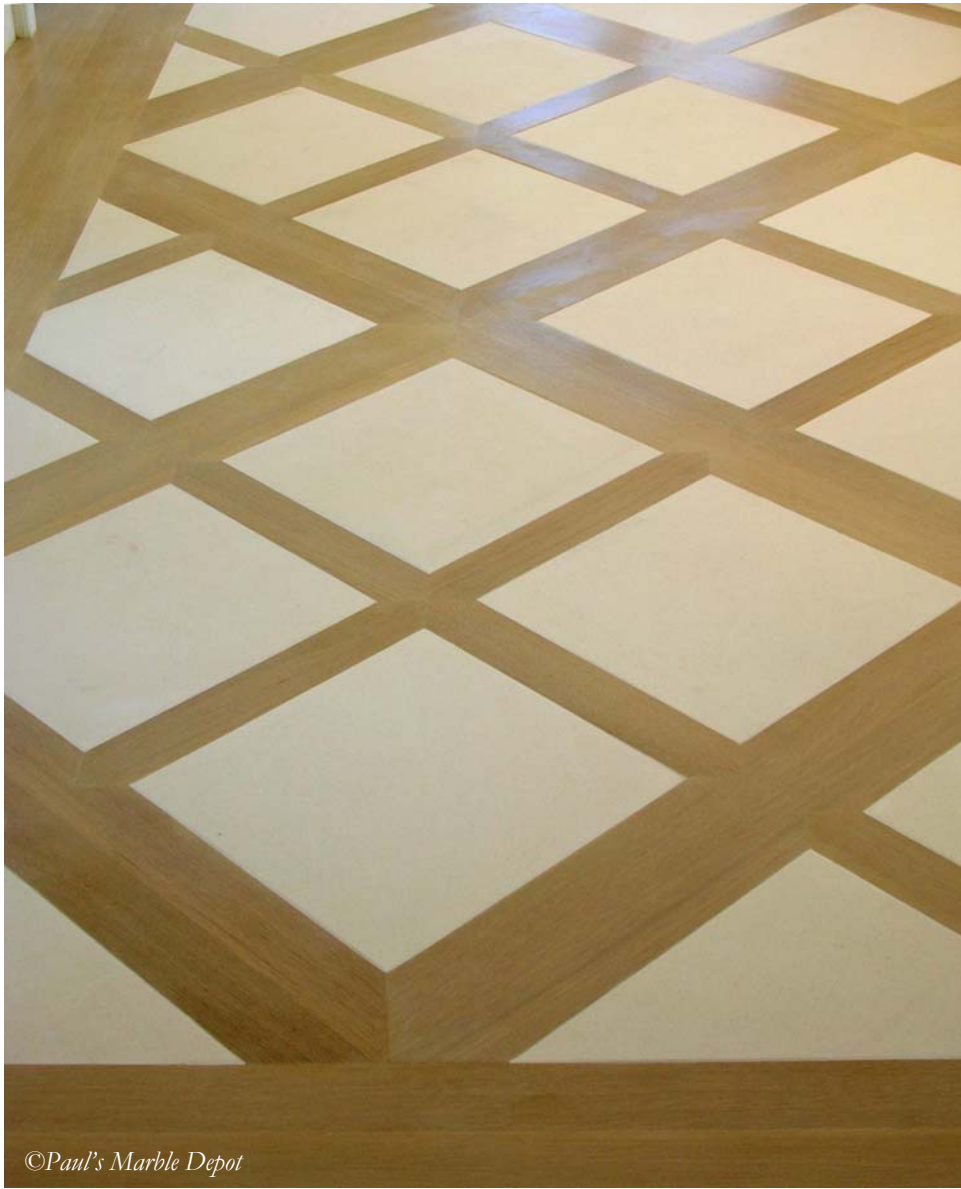


©Paul's Marble Depot



©Paul's Marble Depot

Left: Super select limestone for stairs, 2" thick.
First step curved in plane 9" thick and 98" end to end.
Decorative edge fabricated in-house.



©Paul's Marble Depot

Above: Library floor in Super select limestone, 355mm square tiles in 2cm thickness (from Eastern Europe) were inlaid in individual wooden flooring.

Right: Super select limestone floor in 560mm square tiles with soapstone diamond.

Approximately 6000sqft of stone was supplied.

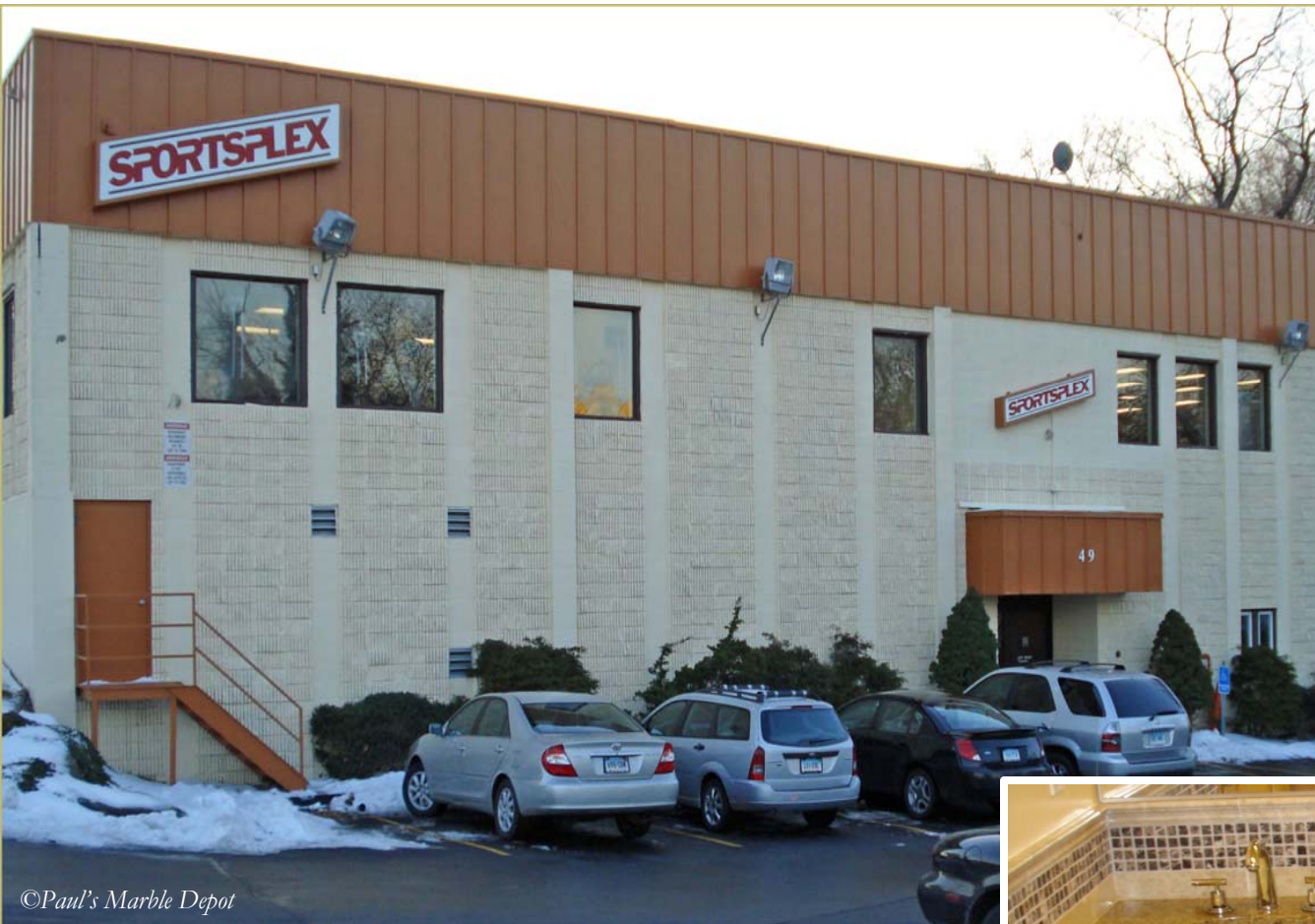
Above Right: Landing floor, 2" thick limestone deco edged and curved cut in-house.



©Paul's Marble Depot



©Paul's Marble Depot



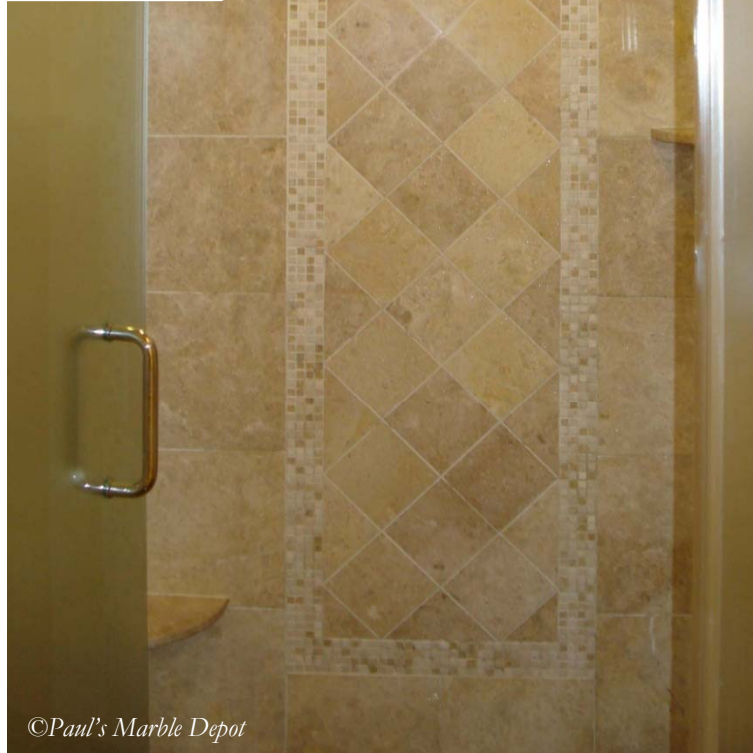
©Paul's Marble Depot

*This page and opposite:
A Sports club in Old Greenwich
neighborhood*

Right: *Opal Mix 2" x 2" floor,
Golden leaf granite vanity top.*



©Paul's Marble Depot



©Paul's Marble Depot

Above: Shower walls with Opal Brown 12" x 12" field and Opal Brown 6" x 6" inserts with Opal Mix border 1/2" x 1/2".

Above Right: Dark Emperador 3/4" x 3/4" floor, Opal Brown select walls.

Right: Corridor walls Opal Brown 12" x 12" with Dark Emperador 3/4" x 3/4" mosaic topped with Opal Brown chair rail. Corridor floors throughout, 2" x 2" Opal Mix with Dark Emperador 3/4" x 3/4" mosaic border.



©Paul's Marble Depot



©Paul's Marble Depot

A 140 unit townhouses project in Connecticut.



©Paul's Marble Depot

This 140 unit townhouses project was a challenge not only because of the requirement for seamless 122" long by 48" wide kitchen peninsula countertop but also because of the number of different stone combinations that were offered to the owners.

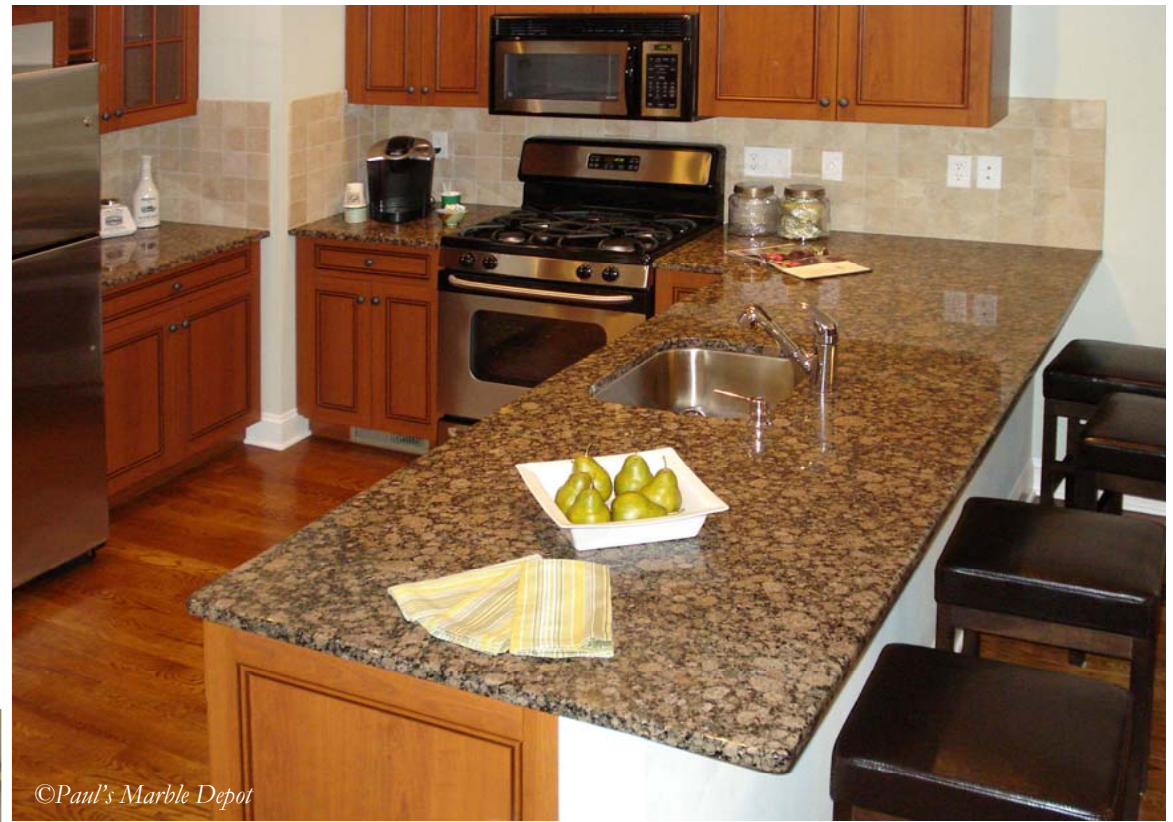
The vanity tops for the master bathroom was designed in three pieces, installed two heights. This required a backsplash in one piece with two intricate notches and widths.



©Paul's Marble Depot



©Paul's Marble Depot



©Paul's Marble Depot



©Paul's Marble Depot

Above: This custom made kitchen countertop in Baltic Brown granite is installed without seam and measures 122 inches by 48 inches.

Left: Master bath vanity top in Gioia Carrara. Vanity backsplash is dual height in single piece measuring 96 inches.



©Paul's Marble Depot

The Courtyard Marriott, Stamford, Connecticut, above, 130 Guest suites bathroom tops were custom manufactured overseas. The curved front vanity tops had apron curved in plane, 7" total thickness.

Right: Black Granite reception desk top piece, 150" long and curved cut with bullnose edging.



©Paul's Marble Depot

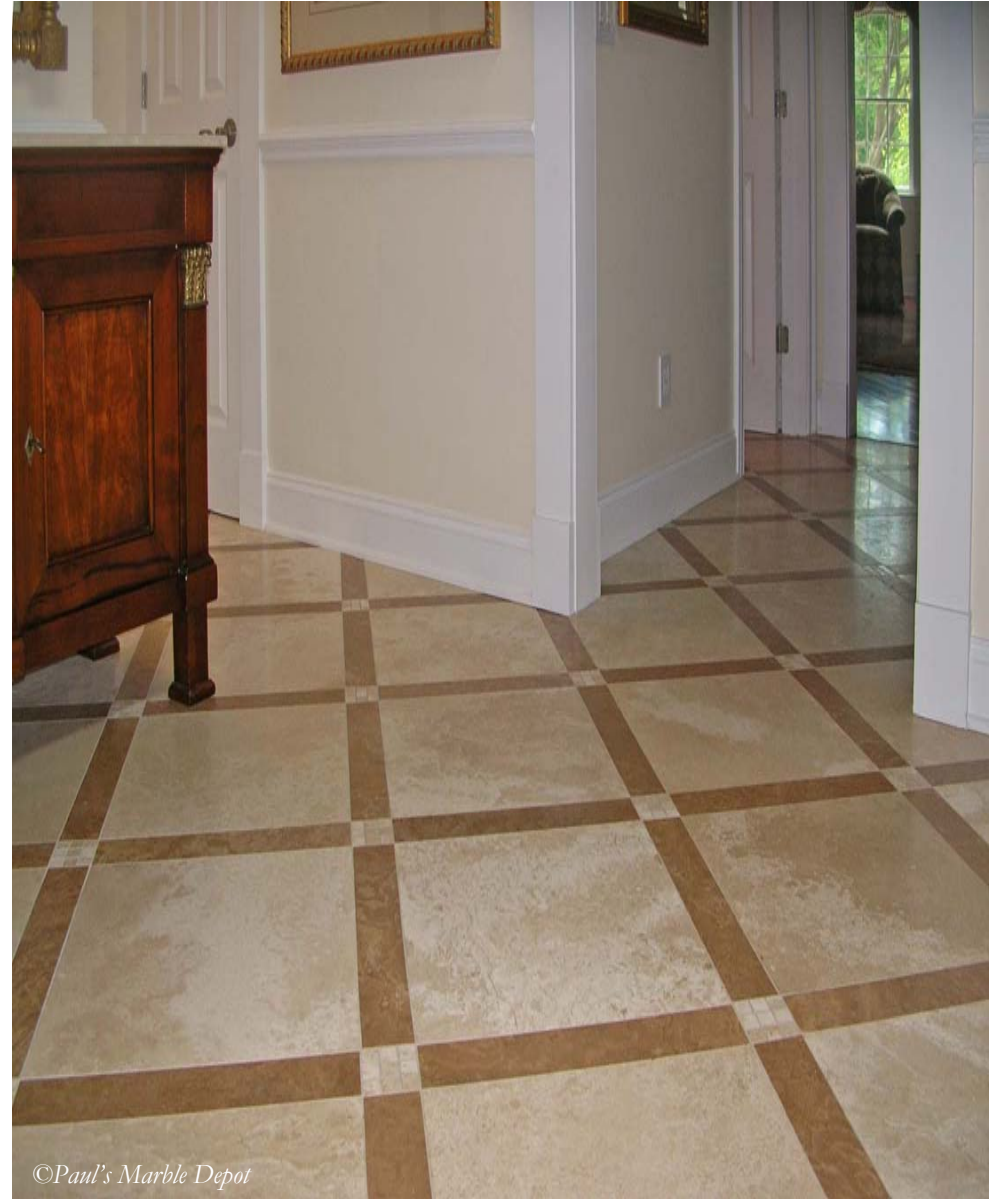


©Paul's Marble Depot



©Paul's Marble Depot

For a sun room flooring- Radial cut 3/4" thick travertine. The bands are of equal width, cuts at alternating bands to stagger.





©Paul's Marble Depot



©Paul's Marble Depot

Above: For a salon spa in Darien, Connecticut, Opal Beige field, Light Emperador bands and Dark Emperador inserts.



©Paul's Marble Depot



©Paul's Marble Depot



©Paul's Marble Depot

Above: A custom designed jumbo size basket weave for kitchen floor. This weave was sized to the dimension of the kitchen floor. The chiseled black granite dots are 57mm x 57mm and tumbled Walnut tiles, specially manufactured, are 127mm x 254mm.

Above Left: Opal Green 12" x 12" tiles in checkerboard pattern for entrance carpet.

Left: Durable, budget priced slate flooring for mudroom.



©Paul's Marble Depot

Above: Carrara tiles 16" x 16" for an entrance foyer, with Opal Gray diamonds.



©Paul's Marble Depot

Above: For a house in Westerly, Rhode Island, limestone in size 24" x 24" was used for library and entrance hallway floor, with tumbled honey onyx mosaic accent.



©Paul's Marble Depot

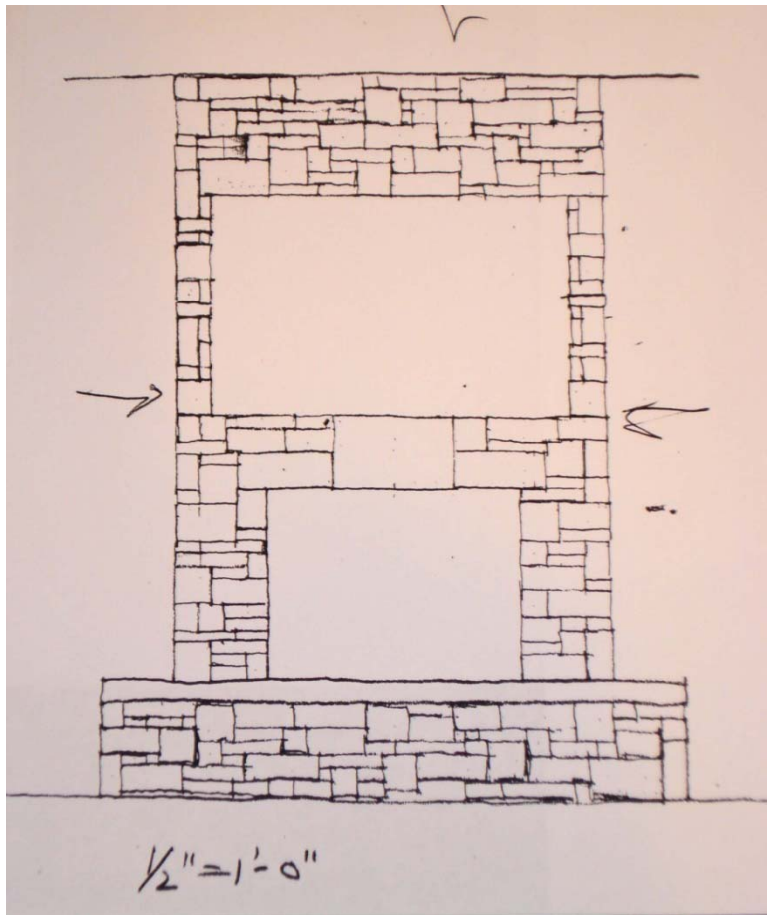
Above: Mudroom with Rich Autumn slate on the floor in color variation.

The counter top is Black Absolute (honed).

Above Right: The floor of a laundry room in glazed Porcelain tiles 16"x16".



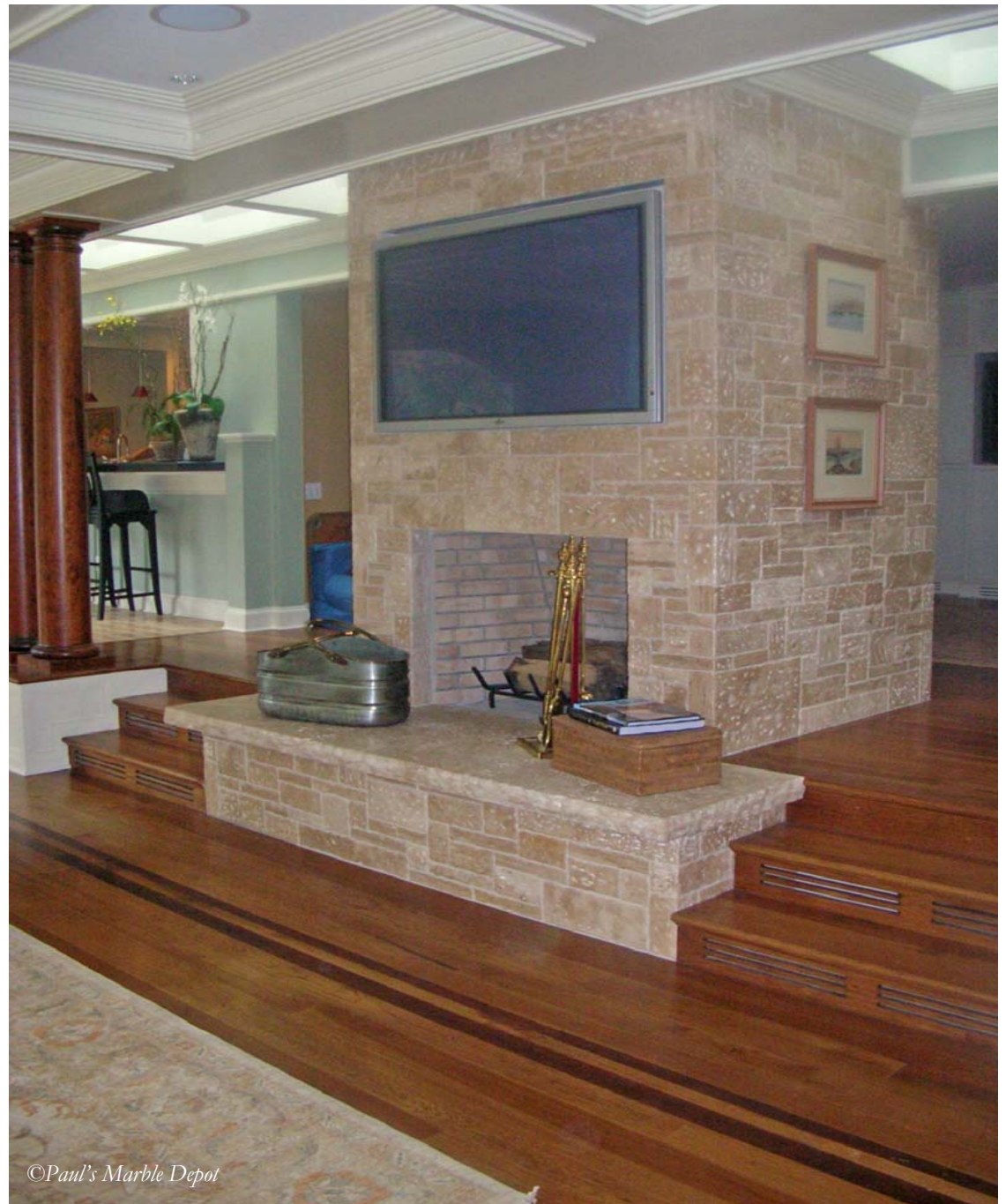
©Paul's Marble Depot



***This page:** For a house in Greenwich, Connecticut, this bi-level fireplace enclosure was designed by an architect from San Francisco, California .*

Approximately 5000 pieces of super select travertine in sixteen different sizes and 4" thickness were custom manufactured by our supplier in eastern Europe.

The hearth stone is solid 3" thick.



©Paul's Marble Depot



Custom fireplace surrounds:
Modern (on the right) and Classic (below).

Both the surrounds are in an inch and a quarter thick limestone, fabricated in-house and installed by our crew on-site.

Below Right: *The hearth and the surround in exquisite Carrara marble stands out against the striking pink wooden mantle.*





©Paul's Marble Depot

Custom Mosaic- For a restaurant in Bronxville, New York, Carrara with Red Laguna cut 5/8" by clipped 5/8".



An integral aspect to our Tiles and Mosaic supply - custom mosaic production, your design or ours, from an offering of refined selection of stone and colors.

(For more information, please ask for our tiles and mosaic catalog).



©Paul's Marble Depot

For Kitchen Backsplash- Clients' design, Arrarot marble with Costa Smeralda, lightly tumbled, 3/8" x 3/8".



©Paul's Marble Depot



©Paul's Marble Depot



©Paul's Marble Depot



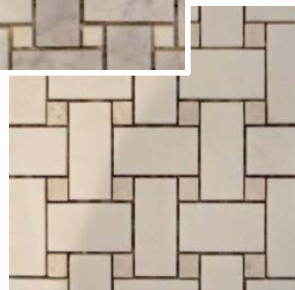
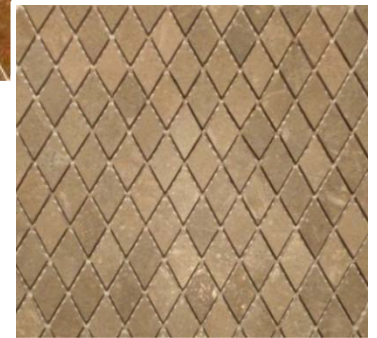
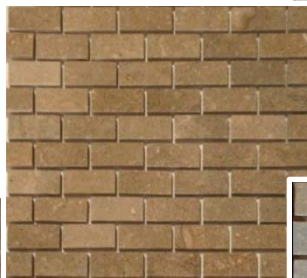
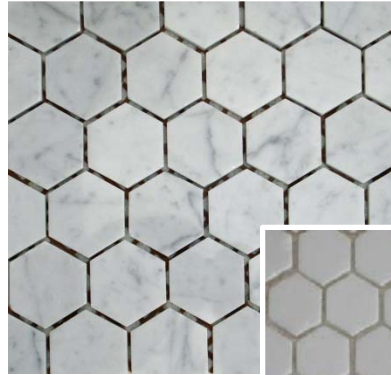
Samples of production from our Tile factory: The items below are manufactured in-house, including the tumbled pebbles.

We specialize in custom combination basket weaves, matching rhomboids, hexagons, 2" x 4" and 3" x 6" tiles.

In-house production allows us to offer consistent quality and total match between different size tiles and mosaics.

©Paul's Marble Depot

More information on the production of tiles, mosaics and decorative borders can be found in our Tile catalog.





©Paul's Marble Depot

Our workshop in action! Pre-fabrication assembly for a kitchen with main piece run of 240" in length, color and vein match.



©Paul's Marble Depot

Our yard. Shipment from Italy, preselected at the factory, being unloaded.